

# ENDEAVOR HEALTH KELLOGG CANCER CENTERS

## DONOR IMPACT REPORT 2025



**Endeavor Health**  
**Kellogg Cancer Center**

**POWERED  
BY GIVING**



We are pleased to present the 2025 Donor Stewardship Report for donors to Kellogg Cancer Centers at NorthShore Hospitals, part of the Endeavor Health Cancer Institute. This report highlights recent achievements in leadership recruitment, treatment space expansion, patient support services and groundbreaking research. The steadfast support of our community makes this growth and progress possible. Your generosity drives innovation, compassion, and hope for our patients, their families and the communities we serve.

Thank you for being an essential part of our mission.

### New leadership positions attract top talent from across the U.S.

Kellogg Cancer Center is proud to be expanding as the overall Endeavor Health system grows. This includes attracting top talent from across the country to serve in new leadership roles to help guide this expansion in a meaningful way both locally in our community as well as on the national and international stages. We're excited to welcome three new physician leaders in 2025.

**NorthShore Hospitals  
Foundation**

Part of  Endeavor Health

1001 University Place | Suite 428 | Evanston, IL | 60201  
(224) 364-7600 | [philanthropy@northshore.org](mailto:philanthropy@northshore.org)  
[foundation.northshore.org](http://foundation.northshore.org)

**Ted James, MD**  
**Physician Executive for the Endeavor Health Cancer Institute**



**Ted James, MD, is the Physician Executive for the Endeavor Health Cancer Institute.** Dr. James joins Endeavor Health from Beth Israel Deaconess Medical Center in Boston where he served as Chief of Breast Surgical Oncology and Director of the Breast Center. Dr. James holds a Master of Science in Healthcare Management from the Harvard T. H. Chan School of Public Health and has completed several prestigious leadership development programs at the National Academy of Medicine and the Harvard Macy Institute.

In his new role of Physician Executive, Dr. James' extensive clinical expertise, leadership and commitment to advancing cancer care will prove invaluable in shaping how cancer care is delivered across the Endeavor Health system. **Some of Dr. James' specific areas of interest include improving outcomes in breast cancer surgery and translating cancer research into care for the community.** He's also currently involved in research to better understand tumor metastasis and to identify new pathways for targeted therapies. One area he sees as an opportunity for breakthroughs in cancer treatment is the use of molecular profiling and artificial intelligence (AI) to target treatments more precisely to each individual patient. Precision oncology and holistic care driven by clinical trials will certainly be an area of interest in the future.

**Dhruv Bansal, MD, MBA**  
**Program Director for Immunotherapy**

Dr. Bansal comes to Endeavor Health from St. Luke's Hospital of Kansas City where he served as Director of Precision and Thoracic Oncology and performed extensive research on non-small cell lung cancer biomarkers and immunotherapy at the Saint Luke's Cancer Institute. **As the Program Director for Immunotherapy at Kellogg Cancer Center, Dr. Bansal will be responsible for building on existing efforts to establish and lead a team to enhance clinical care delivery and research in immunotherapy.** To ensure that appropriate diagnostic and therapeutic aspects are in place,



Dr. Bansal and his team will partner with colleagues in clinical and research capacities, pathology, laboratory medicine, pharmacy, and more. At the same time, they'll collaborate with their colleagues in NorthShore Hospitals Foundation to ensure the continuity and ongoing sustainability of the program through philanthropy.



**Mia Levy, MD, PhD**  
**Physician Director of Innovation**



Dr. Levy received her medical degree here in Chicago from Rush Medical College before heading to Stanford University where she did her oncology training and earned a doctorate in biomedical informatics. She's done extensive work in oncology as well as cancer health informatics, including developing the "My Cancer Genome" tool, which matches tumor mutations to therapies and relevant clinical trials.

**Dr. Levy's role will allow her to help shape Kellogg Cancer Center's implementation of molecular diagnostic and therapeutic pathways, as well as implement a program for clinical breast cancer survivorship and direct growth in physician innovation.** This role will also have leadership responsibilities on the Molecular Tumor Board. Dr. Levy's recruitment is made possible directly by philanthropic support from donors.

**Endeavor Health partners with Exact Science and Scott & White Health on blood test for early cancer detection**

Endeavor Health and local primary care doctors will conduct a real-world clinical trial of a blood test for early detection of multiple cancers, known as the multi-cancer early detection (MCED) test, involving 5,000 patients over three years. Peter Hulick, MD, Medical Director of the Mark R. Neaman Center for Personalized Medicine at Endeavor Health's NorthShore hospitals, noted that effective early testing could identify cancers that currently lack useful screening methods and account for two-thirds of cancer deaths in America. **The test is particularly important for detecting cancers that are currently difficult to screen for, such as ovarian and pancreatic cancer.** Conducted in partnership with Madison, Wisconsin-based Exact Sciences and Baylor Scott & White Health in Texas, the study involves up to 25,000 patients to assess clinical performance, patient experience and psychological impact over five years. This testing is crucial for improving healthcare outcomes and aligns with the goals of the Endeavor Health Davis Family Center for Preventive Genomics to support informed decisions about early diagnosis and personalized treatment.



## Support services for women undergoing cancer treatments

**A cancer diagnosis is life-changing, and cancer patients deserve to be allowed to focus on their treatment without worrying about how their treatment will impact their family or their daily life.**

In addition to an ongoing focus on prevention, early detection and advanced treatment options for cancer, Kellogg Cancer Center is committed to providing patients and families access to a full range of resources to help navigate and manage their cancer journey. Partnerships with charitable organizations and community members are key to this work. Generous donors have funded specific patient assistance grants, which are used to help patients with medical bills, medications and other related costs.



**The Karen Dove Cabral Fund** provides one-time grants to young mothers with breast cancer — supporting with resources such as childcare, medication, transportation and more as each family reconfigures household responsibilities. Meanwhile, **The Forward4Tobi Foundation** was established in 2013 in memory of Tobi Lauren Klonecki to perform a similar function. Since then, Forward4Tobi has provided over 100 women who are fighting breast cancer with grants to help with unmet financial needs like medical expenses, rent, groceries and more. Also important for women undergoing cancer treatments are integrative oncology wellness practices like acupuncture sessions, massage therapy and functional nutrition counseling. The **ROOTS & WINGS Charitable Foundation** was founded by Diana Keen to help support breast cancer patients' treatment in this holistic way.

## Endeavor Health Glenbrook Hospital expands to fourth cancer treatment suite



**Endeavor Health Glenbrook Hospital is expanding its oncology treatment capabilities by building out a fourth chemotherapy treatment suite.** This new suite joins three similar suites currently being used to full capacity, and it will be built within existing space at the hospital that had been previously earmarked for this purpose. It will add nine treatment rooms, four exam rooms, additional charting space for clinicians and a new vitals station. This critical expansion will directly address the needs of the community, increase patient access to care and create more collaborative spaces for clinicians.



## Research highlights

### [Oncotype DX testing combined with artificial intelligence \(AI\)](#)

**Poornima Saha, MD, and Katharine Yao, MD, in collaboration with their colleagues at the University of Chicago, are leading a study combining Oncotype DX testing with artificial intelligence (AI) to improve breast cancer treatment for younger patients.** Focused on early-stage, ER-positive (estrogen receptor-positive), HER2-negative cancers — particularly with minimal or no lymph node involvement — the study aims to better predict recurrence risk and chemotherapy response. Oncotype scoring already helps identify patients who may safely avoid chemotherapy (those scoring 0–25). By adding AI, the study enhances predictive accuracy and personalizes treatment decisions. Results have been promising, sparing many women from unnecessary chemotherapy. As it nears publication, the study could help establish AI-enhanced Oncotype testing as a new standard of care — delivering more precise, evidence-based treatment while reducing side effects and improving outcomes for women facing this difficult diagnosis.

### [Using blood tests instead of biopsies for detecting genetic changes in prostate tumor sites](#)

**Oncologist Daniel Shevrin, MD, and his team have developed a promising new approach to tracking genetic changes in advanced prostate cancer tumor sites using blood tests — more specifically, liquid biopsies.** These mutations often allow cancer to evade both the immune system and treatments like chemotherapy or immunotherapy. Dr. Shevrin's longitudinal study is validating the effectiveness of liquid biopsies in detecting these changes, helping guide timely, personalized treatment decisions. Already, the approach has extended and saved lives. While traditional tissue samples and archival biopsies have long been the gold standard, blood-based testing is emerging as a potential replacement. Though further research is needed, this method represents a powerful new tool to combat genetic mutations and stay ahead of the cancer.



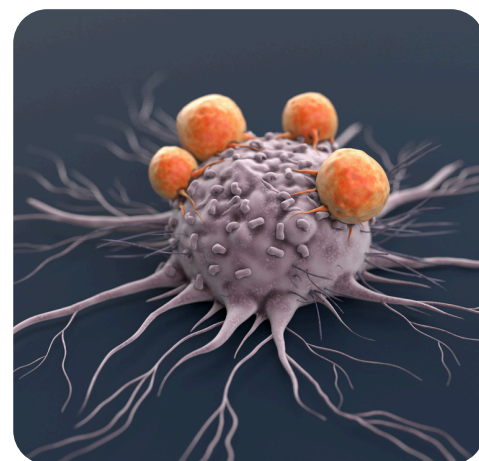
## Research highlights continued

### Cell therapy advancements:

### Harnessing the power of the patient's own immune system to fight cancer

**Exciting advancements in cell therapy are underway at Kellogg Cancer Center, supported in part by philanthropy.** We've now established a dedicated cell therapy team with David Grinblatt, MD, as program director and Mila Ter-Saakyants, APN, as a coordinator. For our first patients treated with CAR T-cell therapy in 2023, we were able to target one form of lymphoma. But by contracting with two companies on three new cell therapy products, we're now expanding cell treatment for multiple myeloma and additional lymphoma types.

Our partnership with lovance Biotherapeutics brings TIL (tumor-infiltrating lymphocyte) therapy to our patients. TIL therapy involves extracting lymphocytes from a patient's tumor, expanding them in a lab, and reinfusing them — after chemotherapy — to target cancer more effectively. This approach, primarily for melanoma, has shown promising results for patients with limited treatment options. **We aim to be among the first community cancer center sites to offer this next-generation treatment, which previously was available at only select academic centers.**



## Thank you!

**We are truly grateful for your commitment to advancing cancer care at the Kellogg Cancer Centers at NorthShore Hospitals, part of the Endeavor Health Cancer Institute. We hope you share our excitement and optimism as you read about these cancer-fighting advancements. Your generosity ensures patients receive cutting-edge cancer treatment from leading professionals, furthering our mission to help everyone in our communities be their best.**

**NorthShore Hospitals  
Foundation**

Part of  Endeavor Health

If you would prefer not to receive further communications from NorthShore Hospitals Foundation, Part of Endeavor Health, simply contact us at [Philanthropy@northshore.org](mailto:Philanthropy@northshore.org); call (224) 364-7600, 1001 University Place, Suite 248, Evanston, IL 60201.